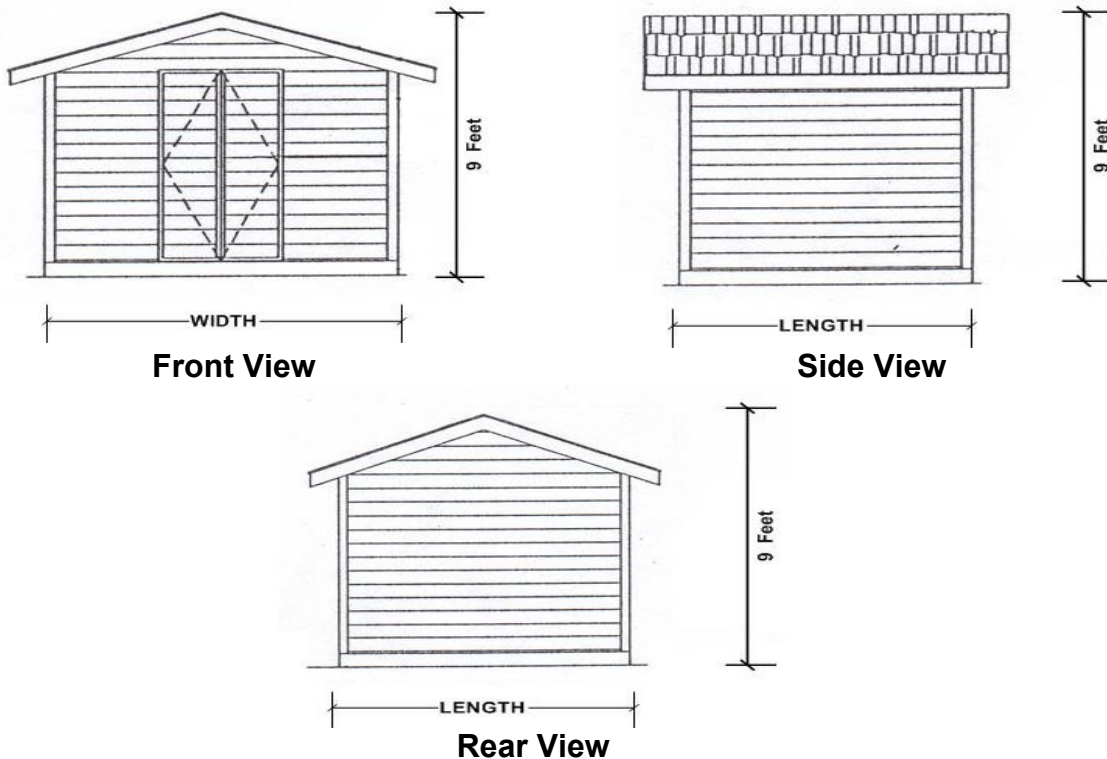


Trovitsky Park Standard Shed Detail



Details:

Maximum height: 9 feet

Maximum square footage: length x width = 120 sq feet (for example 10' x 12')

Roof must be asphalt shingle type or style and color should be similar to home's roof or approved fence color.

Color of siding and trim must match house or approved fence color as closely as possible.

Shed may have sky lights and roof ventilation.

Doors may be single or double.

Any number of regular windows may be installed.

One shed per property.

Location:

Shed must not obstruct the flow of water through drainage channels or interfere with the installation and maintenance of utilities and must conform to the appropriate setbacks and easements for the property.

Notes:

An approval by the Architectural Control Committee (ACC) is required before the installation of a shed can begin. The standard Homeowner's Improvement Application must be submitted with the details of the proposed shed and its location. This includes the following:

- Plat map with location of shed clearly marked
- Shed dimensions (height, width, and length)
- Shed roof material
- Shed colors (primary, trim and accent)

Please be advised that approval by the ACC does not constitute approval by the city, county or any other agency with governing jurisdiction. Nor does the ACC review applications for structural integrity. It is the responsibility of the applying homeowner to contact the local jurisdiction to ensure that all projects meet code and have all other necessary permits/approval prior to beginning the project.